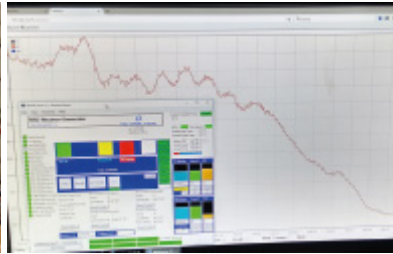


# NSD-350-8 or 18-C Neutron Generator

## DD 2.5 MeV or DT 14 MeV options



- Intelligent fail-safe automation control
- Emergency stop and door switch external interlock loops plus extra inputs for dosimeter alarm signals
- Remote connection watchdog
- LB112 dosimeter integration interface
- UN2911 Class 7 excepted transport package (applicable to DT or TT only)
- No environmentally harmful SF6 -gas
- DD/DT/TT gas is stored in a solid getter pump for vacuum pressure in the sealed reaction chamber at room temperature (no risk of outward
- No breakable glass components



## Specifications

- Electrode and fusion emission zone length in middle of reaction chamber: **350 mm**
- DD 2.5 MeV neutron yield: maximum  $\sim 4 \times 10^7$  n/s output with 8 kW and  $\sim 9 \times 10^7$  n/s with 18 kW
- DT 14 MeV neutron yield (65 x DD)
- max. input power 8 or 18 kW high voltage DC
- Greater than 20,000 hour lifetime
- Non-pulsed continuous operation
- Quick start to near full output
- Stable and repeatable operation
- Outer casing is at ground potential
- Reaction chamber: 1300 mm long. 135 mm O.D.
- Neutron emission module  $\sim 25$  kg
- Input power 400VAC  $\pm 10\%$  3 phase Y configuration
- VNC control HMI over LAN via any PC
- OPC or Webservice for integration into systems
- Automated unattended operation for industrial applications
- Submersible option
- Neutron count rate (accepts neutron detector pulses) and availability monitor for gating of momentary outages.